



# The Patrons Chain

THE OFFICIAL NEWSLETTER OF THE NATIONAL GRANGE

AMERICAN HEART MONTH



## GRANGE CAN BE YOUR FOUNTAIN OF YOUTH

According to the CDC, feeling connected with others and having positive, close relationships benefit our overall health, including blood pressure and weight. Having people in our lives who motivate and care for us helps, as do feelings of closeness and companionship.

February 19, 2021

### Grange Month and Community Awards

*By Betsy Huber National Grange President*

As you plan your Grange Month activities for April, may I suggest that you include some recognitions or awards as part of the program? Whether virtual or in person, it is even more important this year to honor people in your community who have been especially helpful to you or others during this pandemic.

National Grange recognizes several “of the Year” occupations at convention, and you can nominate your local honorees using the application forms on the website under Programs – Community Service. Law Enforcement Officer, Firefighter/EMS, and Teacher are those who qualify for National Grange recognition, but you can honor anyone in your community who has gone “above and beyond” this year. When your Grange makes its selection, be sure to publicize the honoree and his/her story with a press release, Facebook post, even radio or TV spot. This will recognize the person for their work, and recognizes your Grange as an organization that serves the community and celebrates its residents.

Also available from National Grange are the Award for Public Service (Pomona) and the Community Citizen Award (Community Grange.) Each has a certificate or plaque and paperweight to present to the awardee. These are available from the Grange Store on the website [www.nationalgrange.org](http://www.nationalgrange.org).

Recognizing community members for their outstanding work is a great way to publicize the Grange and its important position in your community. Make it a part of your Grange Month celebration!

### 2021 Grange Month Community Service Activity Suggestions

*By: Pete Pompper National Grange Community Service Director*

Since Grange month and spring both occur in April, I feel it is appropriate that we look at some community service ideas that can be refreshed or would be new to your Grange. If your Grange is in an area where the weather permits you can hold an outdoor event for the community. People are looking for activities that are in a safe environment and still socially distanced.

Some ideas include:

- Seed or seedling swaps: these are a great way to share extra seeds or seedlings you may have either left over from last year or from what you started this year. Several Granges throughout the nation do this.

- Easter egg hunt
- Story time for children (story telling or reading a book)
- Open mic night for the community
- Holding informational meetings/programs that are relevant to your community.
- Organize and host a community wide picnic utilizing locally grown produce or products.
- Start a Farmers market where local producers can sell their products. (This is a great way to introduce the local consumer to the producer which consumers are wanting, also is a great way to support local economy).

Feel free to use these ideas and engage with your community during Grange Month. As you are putting these events on don't forget to take pictures and send them to either the National Grange Community Service Facebook Page or the National Grange Facebook Page. We greatly look forward to seeing your photos and hearing about your projects.

## **Planning Events Online**

*By Amanda Brozana Rios, National Grange Director of Membership, Leadership Development and Communications*

Plans were disrupted quickly last year, but as we canceled Grange Month celebrations, many of us said "we'll just reschedule this for next year." Well, next year is upon us and most of us are realizing rescheduling may not be in the cards in 2021.

So, among many other Grange Month activities, open houses are on hold - or are they? This year, consider holding a virtual open house! Invite your community to "visit" your hall or other meeting place, or meet your members through a platform like Zoom or [FreeConferenceCall.com](https://www.freeconferencecall.com) (which has a video component to the platform and allows up to 100 person meetings free). Take the event a step further, though, to raise interest by offering more than just a look inside your doors. Ask one of your members to teach a very basic handicraft or have someone provide a quick cooking lesson for a favorite throwback dish.

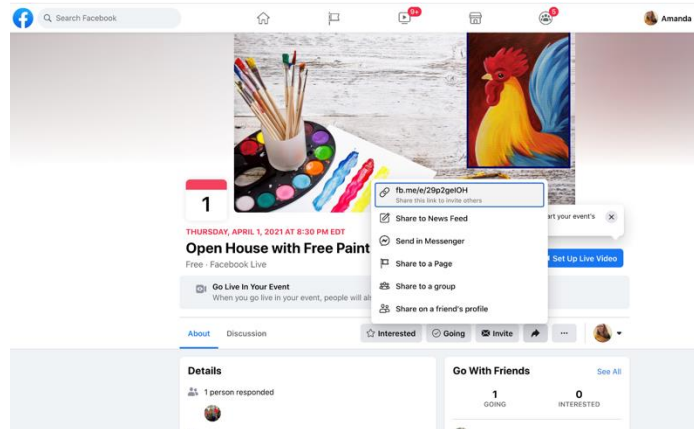
People who attend events like these in person or online are looking for an experience, not just a walk-through and high-pressure sales. Teach your attendees something and make the experience one they will remember and seek out from your Grange again and again. You can also use your Facebook Page to create a free event. Even individuals without a Facebook account can attend, and the best part is there is no limit to the number of attendees you can accommodate with the event.

Just go to your page and use the top navigation bar (under your cover photo) to find Events. Click on Events, then Create a New Event > Online > Free. Name your event, select a date and time, write a brief description and choose a category (I'd suggest "Networking"). In your description, you can list contact information for an event host or someone else in your Grange so those who attend can go back and find how to contact you easily for more information or to get an member application. "For more information about the Grange, contact..."

Additionally, if you are providing an opportunity for attendees to follow along as someone presents a workshop, such as a simple painting lesson or a cooking segment, list the supplies attendees will need in order to take full advantage of the event.

On the next page, choose Facebook Live as your event type, then select next. Click on the gear icon “Event Settings” and choose any co-hosts you wish to include in the event, then select “Show Guest List” under event options. Remember: people follow their friends, so if they see someone they know is attending your event, they are much more likely to attend it as well.

You can choose to allow people to ask you questions through messenger about the event - a good idea if you check your Facebook account frequently. Turn all other options off, then click Save. Finally, consider uploading a cover photo (maybe a good photo of your Hall or your members doing some charitable work), and click Create Event. Invite people who do not have a Facebook account, or who you are not already friends with, go to your Event and click on the arrow facing right that appears under the cover photo (see picture). Share the link with others (these are case sensitive, so always copy and paste directly or make sure if you type it, you have any capital letters capitalized and lower case letters in lowercase) through email, text or on printed flyers. Make sure to note the link is case sensitive.



Be creative! Get others in your community to help you make a successful event and create enthusiasm for your Grange. Use the pandemic to eradicate the “way we’ve always done it” mentality and embrace ideas that will attract new folks to your Grange or the Grange as a whole. And don’t forget to invite us so we can share ideas and success stories with others!

Send your event link to [communications@nationalgrange.org](mailto:communications@nationalgrange.org). You can also request help at the event from the National Grange Membership department by emailing [membership@nationalgrange.org](mailto:membership@nationalgrange.org).

## Staff changes announced at National Grange

National Grange Membership and Leadership Development Director Joe Stefenoni has announced his departure from the National Staff effective this month. Stefenoni said he remains dedicated to the organization that has been such a large part of his life and is excited to continue serving in his role as Vice President of the California State Grange and as a deputy for the Nevada Granges.

“The Grange is an incredible organization that I have had the amazing fortune to not just belong to, but work for in service to our members and our mission,” Stefenoni said. “I will always be a part of the Grange and look forward to the many visits to come with my fellow Brothers and Sisters at Grange events.”

Communications Director Amanda Brozana Rios will be taking on the Membership and Leadership Development Director responsibilities. She previously assisted in membership and leadership development efforts in 2016-17 prior to Stefenoni’s return to the National Staff and called the move both exciting and challenging.

“There are big shoes to fill here – big boots that is. Joe has done an amazing job producing materials for our leaders and members to use to strengthen our organization and bring

new ideas to the way we do membership and leadership development. I'm fortunate to follow such a dedicated staff member who has ensured a solid foundation," Brozana Rios said.

Kennedy Gwin, a lifetime member of the Washington State Grange, who has been working as an intern with the National Grange since July, has been hired full-time as the Communications Manager and will assume many of the day-to-day tasks carried out by the department including producing this weekly newsletter, the Patrons Chain, preparing press releases and statements, writing op-eds, pitching stories about the Grange to reporters, managing the social media accounts of the Grange and providing assistance to Granges, among other tasks.

"This is a big job, but I'm excited to take on this new role and learn and grow with the Grange. I greatly look forward to working with new people and getting the chance to expand my horizons," Gwin said.

National Grange President Betsy Huber said she believes the hires will provide continuity for our members and excel in their new roles.

Programs, Benefits, Sales and Membership Recognition Director Loretta Washington, IT Director Stephanie Wilkins, Operations Manager and Junior Director Samantha Wilkins, as well as Gwin, will each be taking on a small portion of the duties of Program Assistant Kelly Klingman, who is no longer with the National Grange.

"We wish Joe all the best, but know he's a shining star in the Grange that will remain with us as a leader in our membership," Huber said. "The dedication our staff has shown to the organization is humbling and we know they will do a wonderful job serving our members and continuing to move our organization forward in their new roles."

## **Who Do You Think You Are?**

*By Samantha Wilkins, National Junior Grange Director, and Mandy Bostwick, National Grange Youth Director*

For nearly a year now we have been stuck at home and have had to learn to change and adapt the way we do things. Those things could be how we work, how we are educated, or even how we grocery shop. Over the past year, many of us have learned more about ourselves than we ever thought possible. Some of us have discovered and taken on a new hobby or advanced our skills in one we were already passionate about. Many of our Grangers have been very creative about how they have been able to come together and serve their communities.

Many of us have learned new attributes about ourselves that we didn't know we had; we have gained new insight as to what is most important to us. But have you ever wondered what Muppet or Sesame Street character you were most like? We know we hadn't considered that before. While we were digging deep into some old archived workshops, we found this quiz that we knew we needed to share.

A team of researchers got together and analyzed the personalities of Sesame Street/Muppet characters, and put the information gathered into a quiz. Sometimes it is really fun to break away from the monotony of the day today and discover new things about ourselves. Some of you may be thinking how does this relate to Grange? Well, folks let us tell you: Discovering more about ourselves is sometimes the best way to unearth a little more detail about ourselves; that then furthers our abilities to succeed in our day-to-day work, or within our Grange work. Learning about our inner strengths and weaknesses will help in exploring and investigating how we can best serve our Granges and furthermore our communities. After you complete the quiz, go to the National Grange Youth or Junior Facebook page and complete the

survey, where over the next few days, we will share what character best described us and a little bit of why we think that it could be beneficial in our Grange work.

Answer each question with the answer that most describes you, then add up the points that corresponded with your answer. Use a pen and paper, because you'll want to keep track of both the question number and your answer. You'll need both to unlock the secret code at the end.

**1. What describes your perfect date?**

- a) Candlelight dinner for two
- b) Amusement park
- c) Rollerblading in the park
- d) Rock concert
- e) See a movie

**2. What is your favorite type of music?**

- a) Rock and Roll
- b) Alternative
- c) Soft Rock
- d) Classical
- e) Pop

**3. What is your favorite type of movie?**

- a) Comedy
- b) Horror
- c) Musical
- d) Romance
- e) Documentary

**4. Which of the following jobs would you choose if you were given only these choices?**

- a) Waiter/Waitress
- b) Sports Player
- c) Teacher
- d) Policeman
- e) Bartender

**5. Which would you rather do if you had an hour to waste?**

- a) Workout
- b) Read
- c) Watch TV
- d) Listen to the radio
- e) Sleep

**6. Of the following colors, which do you like best?**

- a) Yellow
- b) White
- c) Sky Blue
- d) Teal
- e) Red

**7. Which one of the following would you like to eat right now?**

- a) Ice Cream
- b) Pizza
- c) Sushi
- d) Pasta
- e) Salad

**8. What is your favorite holiday?**

- a) Halloween
- b) Christmas
- c) New Year's Day
- d) Valentine's Day
- e) Thanksgiving

**9. If you could go to one of the following places, which would it be?**

- a) Paris
- b) Spain
- c) Las Vegas
- d) Hawaii
- e) Hollywood

**10. Of the following, who would you rather spend time with?**

- a) Someone who is smart
- b) Someone with good looks
- c) Someone who is a party animal
- d) Someone who has fun all the time
- e) Someone who is very emotional

ANSWER KEY:

- Q1) a=4 / b=2 / c=5 / d=1 / e=3*  
*Q2) a=2 / b=1 / c=4 / d=5 / e=3*  
*Q3) a=2 / b=1 / c=3 / d=4 / e=5*  
*Q4) a=4 / b=5 / c=3 / d=2 / e=1*  
*Q5) a=5 / b=4 / c=2 / d=1 / e=3*  
*Q6) a=1 / b=5 / c=3 / d=2 / e=4*  
*Q7) a=3 / b=2 / c=1 / d=4 / e=5*  
*Q8) a=1 / b=3 / c=2 / d=4 / e=5*  
*Q9) a=4 / b=5 / c=1 / d=2 / e=3*  
*Q10) a=5 / b=2 / c=1 / d=3 / e=4*

10-17 points: You are **OSCAR**

You are wild and crazy and you know it. You know how to have fun and can sometimes seem as though you are too rowdy. You know what you are doing though and are much in control of your own life. People don't always see things your way, but that doesn't mean that you should compromise on your beliefs. Try to remember that your wild spirit can lead to hurting yourself and others.

18-26 points: You are **ERNIE**

You are fun, friendly, and popular. You are a real crowd-pleaser, You have probably been out on the town to share of times, yet you come home with the values that your mother taught you. Marriage and children are important to you, but only after you have fun. Don't let the people you please influence you to stray.

27-34 points: You are **ELMO**

You are cute and everyone loves you. You are a best friend that no one takes the chance of losing. You never hurt feelings and seldom have your own feelings hurt. Life is a breeze. You are witty and calm most of the time. Just keep clear of backstabbers, and you are worry-free.

35-42 points: You are **KERMIT**

You are a lover. Romance, flowers, and wine are all you need to enjoy yourself. You are serious about all commitments. A family person. You call your mom every day, and never forget a birthday. Don't let your passion for romance get confused with the real thing.

43-50 points: You are **BERT**

You are smart, a realm thinker. Every situation is approached with a plan. You are very healthy in mind and body. You teach strong family values. Keep your feet planted in them, but don't overlook a bad situation when it does happen.



## **New Junior Passports**

*By Samantha Wilkins, National Junior Grange Director and Claire Wubben, Intern*

There are some new additions coming to the Junior Grange Passport Program! This innovative way for our Junior Grangers to learn more about their world, their country, their state, their community, and their Grange is constantly looking to improve in order to provide the best curriculums for Junior Grangers. The Passport Program is broadening in size with a variety of new passports for the Junior Grangers to work on and earn their stamps as they learn about new subjects to see what peaks their interest. New ~~career~~ passports include subjects focused on the following areas: What Doctors Do?, Veterinarian Career, Chef Career, French 101, Ecosystems, and Reading English.

The National Grange's new interns, Valerie Stewart, Lindsey Sather, and Claire Wubben are working with the National Junior Grange Director, Samantha Wilkins, to help create new Junior Grange Passports that are related to subjects that they themselves are interested in and studying in college right now. They are so excited to create passports and share what they are learning in college with Junior Grangers through these educational programs.

Their main purpose is to benefit Junior Grangers by providing simple ways to learn more about various subjects in a low-stress environment. In addition, Junior Grangers will benefit by using the passports as a way to embark on a path of self-discovery and learn more about what they might be interested in. There are thousands of possibilities for the continued expansion of the Passport program, and we are excited to have the enthusiasm and expertise of our interns, Claire, Lindsey and Valerie. They are thrilled to share their passions with the Grange and hope some of their enthusiasm spreads to our Junior Grangers and proves to be beneficial in allowing them to study various subject areas without needing any background knowledge on the subject.

If you have an idea that you would like to see created in a passport please feel free to utilize the [passport idea submission form.pdf](#) ([nationaljuniorgrange.org](http://nationaljuniorgrange.org)) or contact Samantha Wilkins, [junior@nationalgrange.org](mailto:junior@nationalgrange.org)

## **Lecture's Program In a Box**

*By Kennedy Gwin National Grange Communications Manager*

February is Black History month and what better way to learn about Black History than with a program in a box, great for Lecturers or a Youth member looking to get more involved!

Lucky for you and all Grangers across the country the National Grange interns, with assistance from National Grange Programs, Benefits, Sales and Membership Recognition Director Lorretta Washington, have been hard at work with a slide show that showcases some of the most influential African American and Black icons in the world that have made strides for the Black community. Some of these inventors you may not know by name but have definitely used their products, whereas others are modern Black icons.

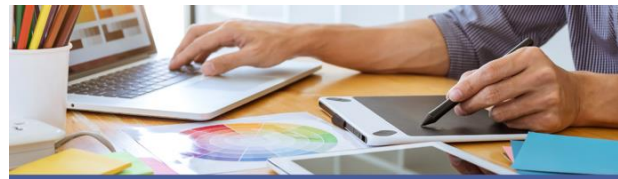
Take time and share this program with your members and learn something new this Black History Month or any other month where you're looking for a fun new program! Click on the link below for the slide show. If you have any issues and need further assistance contact Kennedy Gwin at [kennedy.gwin@grange.org](mailto:kennedy.gwin@grange.org)

Black History Month Slideshow link:  
[https://docs.google.com/presentation/d/1cOr3q7r7QDGuY1DkFTU4buzAr3PyM5bFjWN\\_J1px4zI/edit?usp=sharing](https://docs.google.com/presentation/d/1cOr3q7r7QDGuY1DkFTU4buzAr3PyM5bFjWN_J1px4zI/edit?usp=sharing)



**WEDNESDAY, APRIL 7, 2021**

Speakers from Capitol Hill, the Biden Administration, issue coalitions, National Grange leadership and staff, and more



## FLASH CONTEST!



### DESIGN A GRANGE MONTH SOCIAL POST

- Using the website [canva.com](https://www.canva.com) (or software of your choice), create a social media post (size 1080x1080 pixels).
- Posts should be a positive reflection of the Grange, tie to our 2021 theme - Cultivating Connections - and must contain the Grange Month 2021 Logo and the web address [nationalgrange.org](https://nationalgrange.org).
- Submissions must be sent, along with name and Grange affiliation, to [communications@nationalgrange.org](mailto:communications@nationalgrange.org) by February 28.



- You may submit multiple designs, but each must be submitted individually.
- Posts selected for excellence in design and messaging will be shared with all Granges on the Grange Month 2021 page!

## National Grange Member Benefit

The National Grange has teamed up with Lenovo, a global leader in the PC marketplace, to offer discounts on its entire line of reliable, high-quality, secure and easy-to-use technology products and services.



Members save up to 30% off the everyday public web price of Lenovo laptops, tablets, desktops, all-in-ones, workstations, servers, and accessories. This includes savings on a variety of products for the home and office, such as the award-winning ThinkPad laptops and innovative multimode YOGA tablets.

National Grange members also receive: Free ground shipping on all web orders; Monthly limited-time special offers; Access to energy-efficient green technologies; Award-winning service and support before, during and after your purchase. For more information and easy ordering, visit: <https://www.lenovo.com/us/en/m1nationalgrange>



## A FEW GREAT MENTIONS

*This is a new section we will include each week with a few of the links to articles in which the local, State or the National Grange have been mentioned or our statements have appeared.*

- Op-Ed by Betsy Huber addressing skilled migrant worker visas in the dairy industry: [bit.ly/ng021821-1](https://bit.ly/ng021821-1)
- Letter by Burton Eller on paycheck protection programs: [bit.ly/ng021821-2](https://bit.ly/ng021821-2)



## IENT

Both units  
d 1 bath.  
completely  
currently  
ants are  
each unit is  
d \$450.

## ANS

ations on  
y types:  
uction

DOWN  
purchase

## NONPROFIT SEEKING AFFIRMATIONS

We are building a new website and would like to include testimonials from individuals who have benefited from programs and funding of the Grange Foundation, including those who were able to participate as Grange Youth Officers or Ambassadors. Have you been a recipient of the kindness of Grange Foundation donors? Please, tell us what it meant to you to have the experience you were granted.

Send your 100 word or less testimonials to [communications@nationalgrange.org](mailto:communications@nationalgrange.org) by Feb. 28



2 bed/2 b:  
condo com  
charming l  
Now only



BY  
The suite  
Bedrooms  
dresser  
Fully equi  
bathroom

RENOV.  
This great  
finished be  
new paint,



## SUPPLY STORE

[www.grangestore.com](http://www.grangestore.com)



## Grange Greeting Cards

Mixed set of cards including Thinking of You, Anniversary, Happy Birthday, Congratulations, and Wedding. Was \$5.00 for a set of 10 cards and 10 envelopes. Final markdown price \$2.50 for a set of 10 cards and 10 envelopes.



## APPLY FOR A DEAF AWARENESS GRANT

All details and application available at [grangefoundation.org/deaf](http://grangefoundation.org/deaf)

**DEADLINE: MAY 1**  
**AWARDS NOW**  
**UP TO \$1,000!**



## Grange Emblem Patches

Available in Both  
Iron On (See Left) and Stick On (See Right)  
Both Styles - \$3.50 each

[Click Here To See Them](#)



Visit The Grange Store™ by Monroe - [www.promoplace.com/grange](http://www.promoplace.com/grange)

See Our Full Line of Promotional Items at [www.monroeclassic.com](http://www.monroeclassic.com)

Order on line or call Monroe Classic, Inc. at 1-800-868-2330 or email [sales@monroeclassic.com](mailto:sales@monroeclassic.com)

APPAREL | PROMOTIONAL ITEMS | JEWELRY | REGALIA | AWARDS | SIGNS & BANNERS

## NATIONAL GRANGE & GRANGE FOUNDATION STAFF

Our HQ is located at 1616 H St. NW, 11th Floor, Washington, DC 20006 | (202) 628-3507

**Publisher** Betsy Huber, National Grange President, available to members at [betsy@nationalgrange.org](mailto:betsy@nationalgrange.org) or by phone at (484) 459-1957

**Editor** Kennedy Gwin, National Grange Communications Manager, available by email at [kgwin@nationalgrange.org](mailto:kgwin@nationalgrange.org) or by phone at National HQ, ext. 106. Contact for assistance with publicity, to submit a story idea for the Patrons Chain or social media and more.

**Membership, Leadership Development and Communications** Amanda Brozana Rios. Contact to submit a story idea for Good Day! magazine at [abrozana@nationalgrange.org](mailto:abrozana@nationalgrange.org) or call/text (301) 943-1090. You may also contact her as Foundation Associate in regards to tax-deductible gifts for Grange Foundation.

**Membership Recognition, Sales and Benefits** Loretta Washington, National HQ, ext. 109 or email [sales@nationalgrange.org](mailto:sales@nationalgrange.org)

**Free Grange Websites and emails, Good Day! subscriptions and renewals, Membership Database and more** Stephanie Wilkins, National HQ, ext. 101 or email [swilkins@nationalgrange.org](mailto:swilkins@nationalgrange.org)

**Lecturer** Chris Hamp for program ideas, Quilts of Valor labels, contest details and more, by email at [lecturer@nationalgrange.org](mailto:lecturer@nationalgrange.org) or call/text (509) 953-3533.

**Community Service** Pete Pompper for project ideas, information about "Of the Year" awards and more by email at [communityservice@nationalgrange.org](mailto:communityservice@nationalgrange.org) or phone at (609) 820-6239

**Legislative and Policy Issues** Burton Eller for advocacy information and Grange priorities, contact him at National HQ, ext. 114 or email [beller@nationalgrange.org](mailto:beller@nationalgrange.org).

**Grange Youth** Mandy Bostwick for contest, program and more information for young members at [youth@nationalgrange.org](mailto:youth@nationalgrange.org) or call/text (785) 250-7606.

**Junior Grange** Samantha Wilkins for Passport and other program and contest information at [junior@nationalgrange.org](mailto:junior@nationalgrange.org) or call/text (210) 838-7892.

**Grange Foundation** Joan C. Smith, Chairwoman, for more details about grants, programs and Foundation outreach at [info@grangefoundation.org](mailto:info@grangefoundation.org) or (571) 662-7220.

**Foundation Strategic Partnership Director** Donny Olencziak with corporate giving and grant leads at [donny.olencziak@grange.org](mailto:donny.olencziak@grange.org) or (229) 288-6111.